



What would happen to Europe and North America if COVID-19 lasted a year or more?

CSIU Executive Summary
(Download Full Briefing)

The Coronavirus may require a lockdown of up to a year or more to handle properly.



We don't know if we will develop herd immunity yet and a vaccine is at least 12 months away.



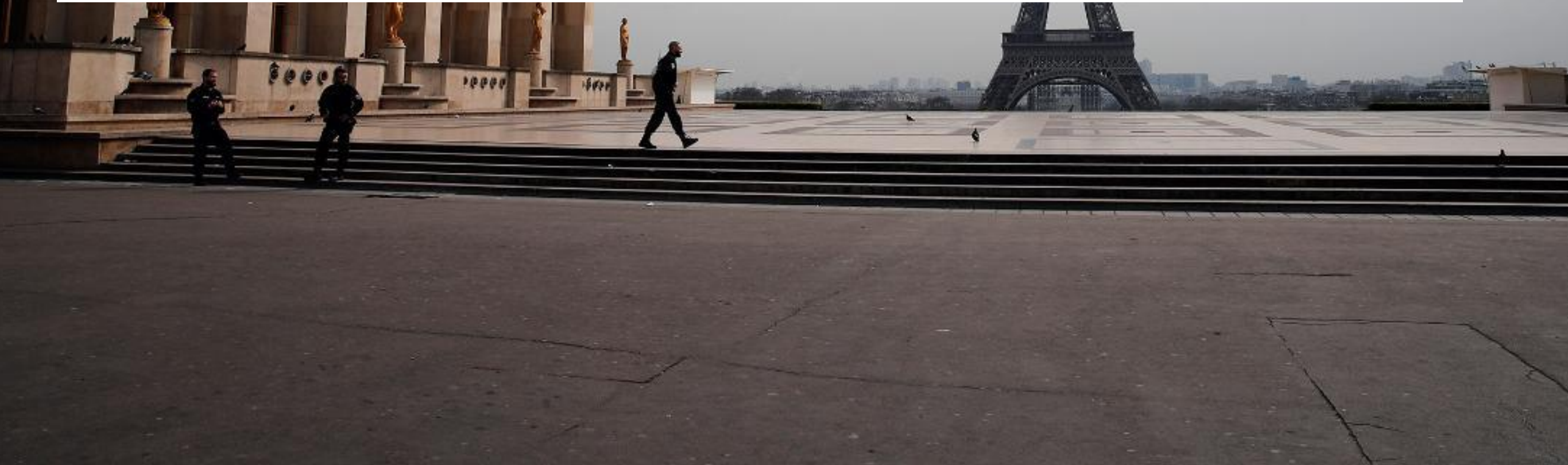
This means we could face sustained (or repeated) lockdowns for up to 12 or 18 months.



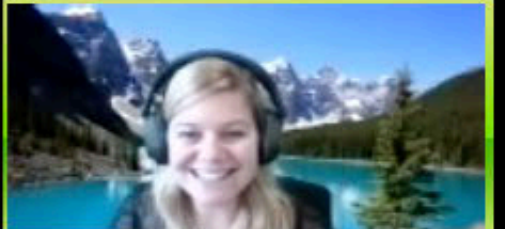
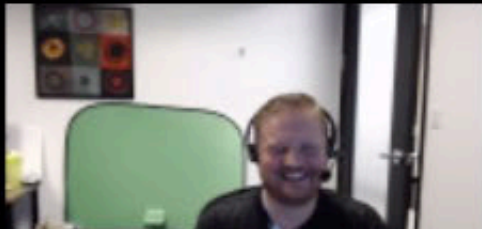
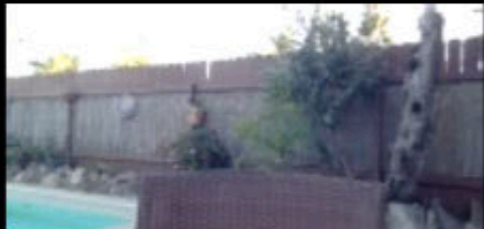
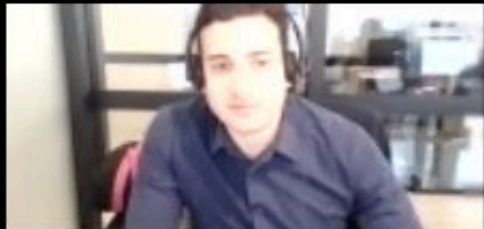
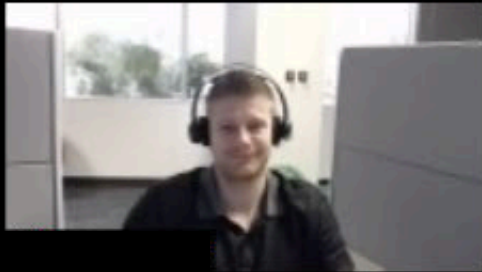
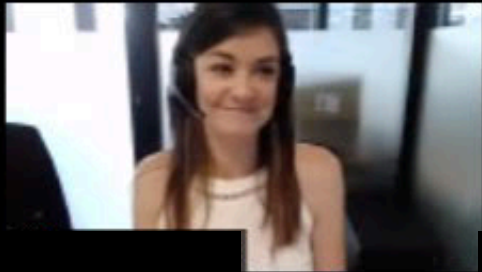
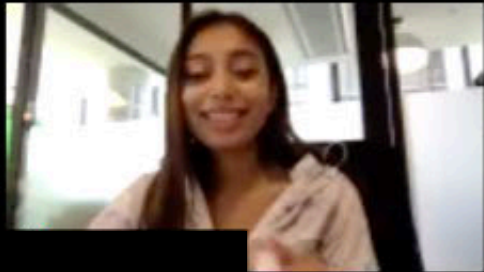
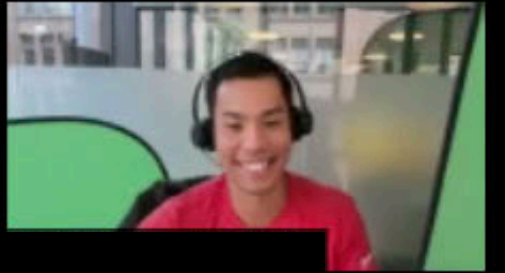
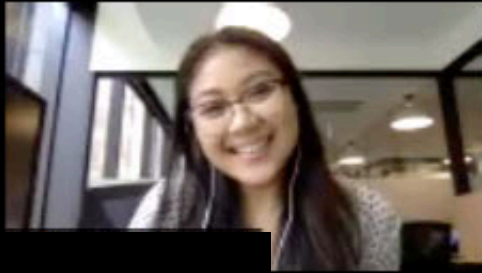
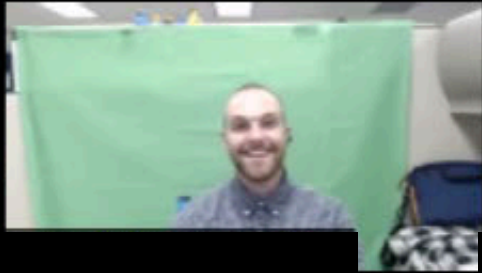
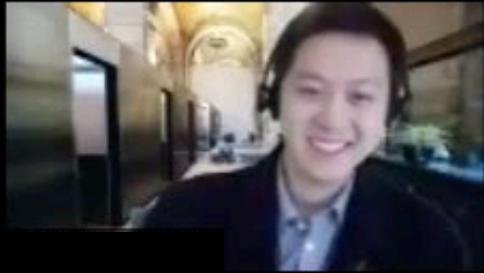
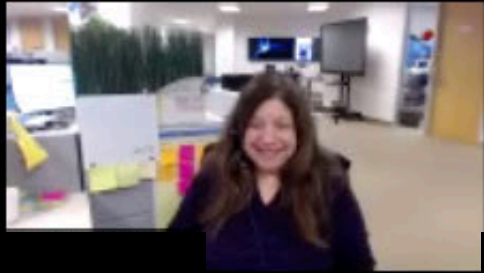
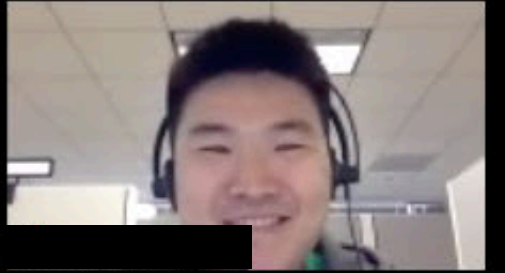
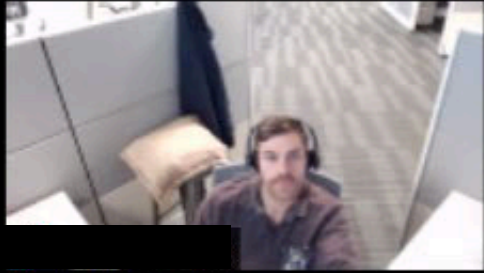
If this is true, what will it mean for the world?



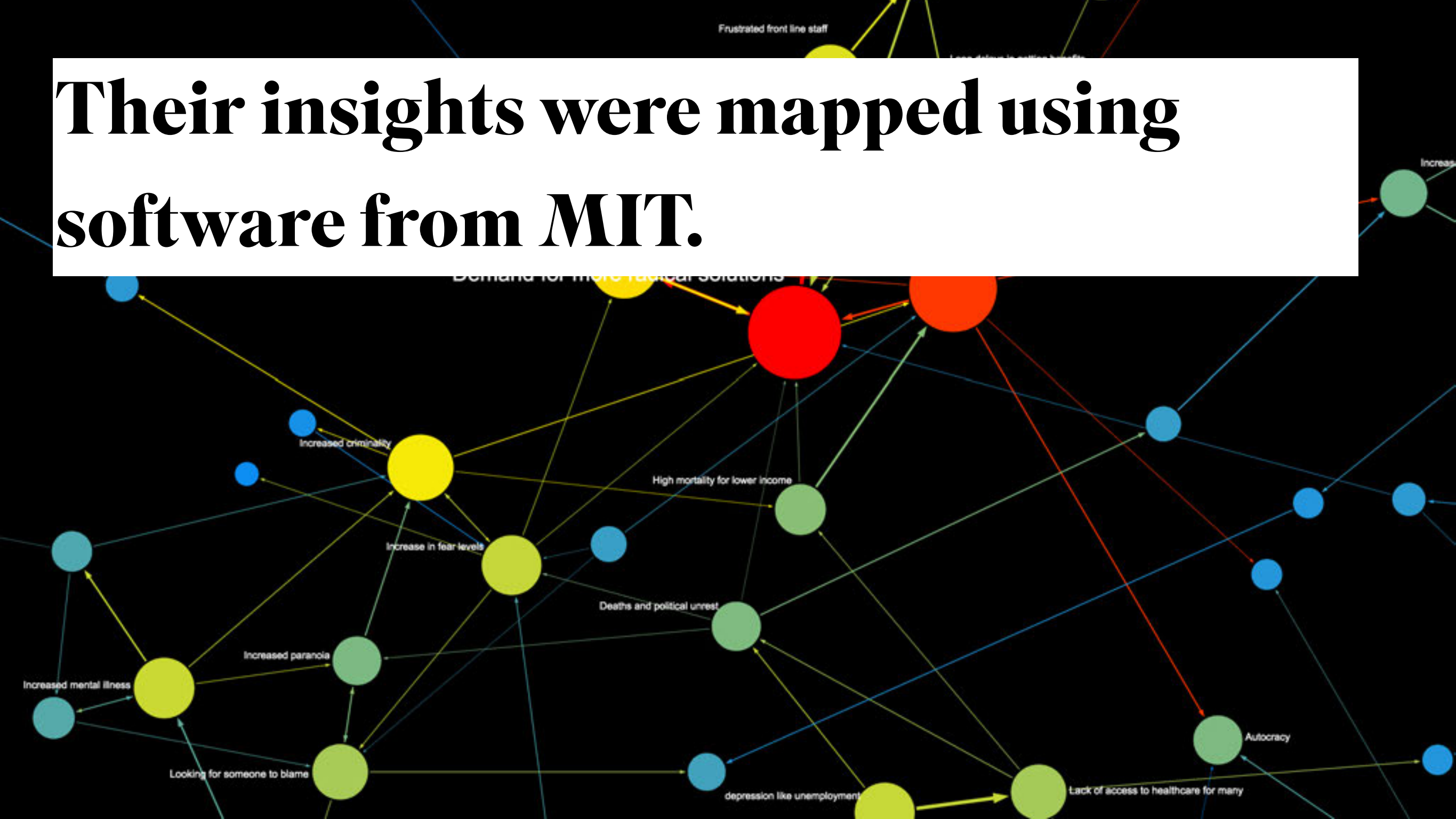
**A group of global futurists,
designers, technologists & policy
makers came together to explore this.**



Nearly 90 experts contributed



Their insights were mapped using software from MIT.



Which uncovered three surprising scenarios.



Each scenario begins with massive unemployment.



**Governments will be forced to
intervene in dramatic ways.**



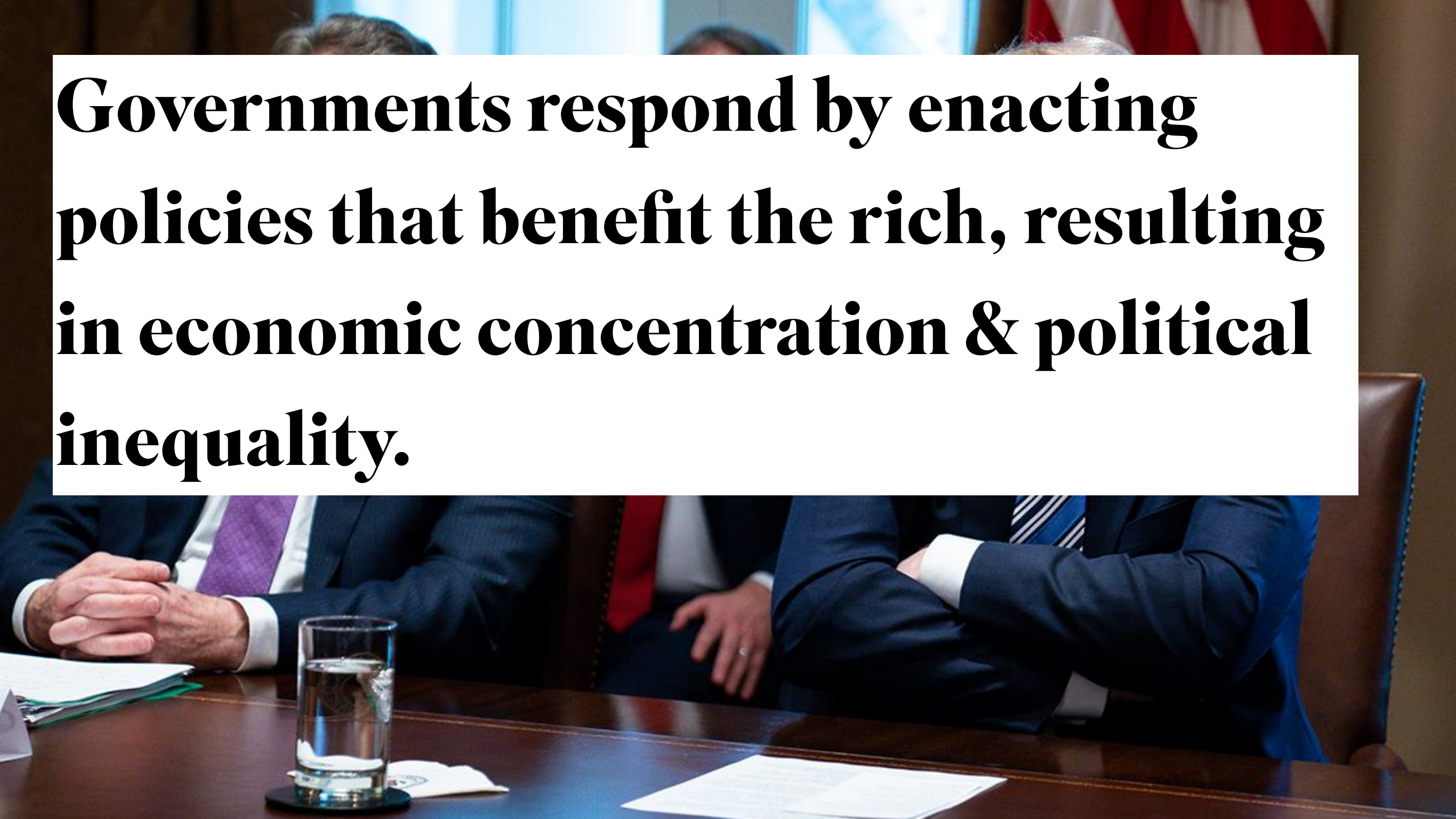
**How they respond will determine
which of these scenarios is most likely.**



Scenario 1: The Pyramid



Governments respond by enacting policies that benefit the rich, resulting in economic concentration & political inequality.



Millions are left angry, frustrated & exposed, looking for someone to blame.



Poverty and violence increases. Gangs, protests & organized crime flourish.



Governments crack down with more extreme measures & totalitarian control.



**Which is administered through
military power & surveillance tools.**



Scenario 2: The Leviathan



Governments expand their powers dramatically, using them to deliver social goals & collective benefits.



**They launch a range of nationalized
regeneration projects focused on next-
gen infrastructure & basic needs.**



Everyone is mobilized to develop local solutions, creating an explosion of bottom-up experimentation with active government support.



This lays the foundation for a post-crisis recovery, but requires significant personal sacrifice.



**It pays off in the end, however,
resulting in a “New New Deal”.**



**There are long-term consequences,
however, in particular reduced
freedoms & much higher taxation.**

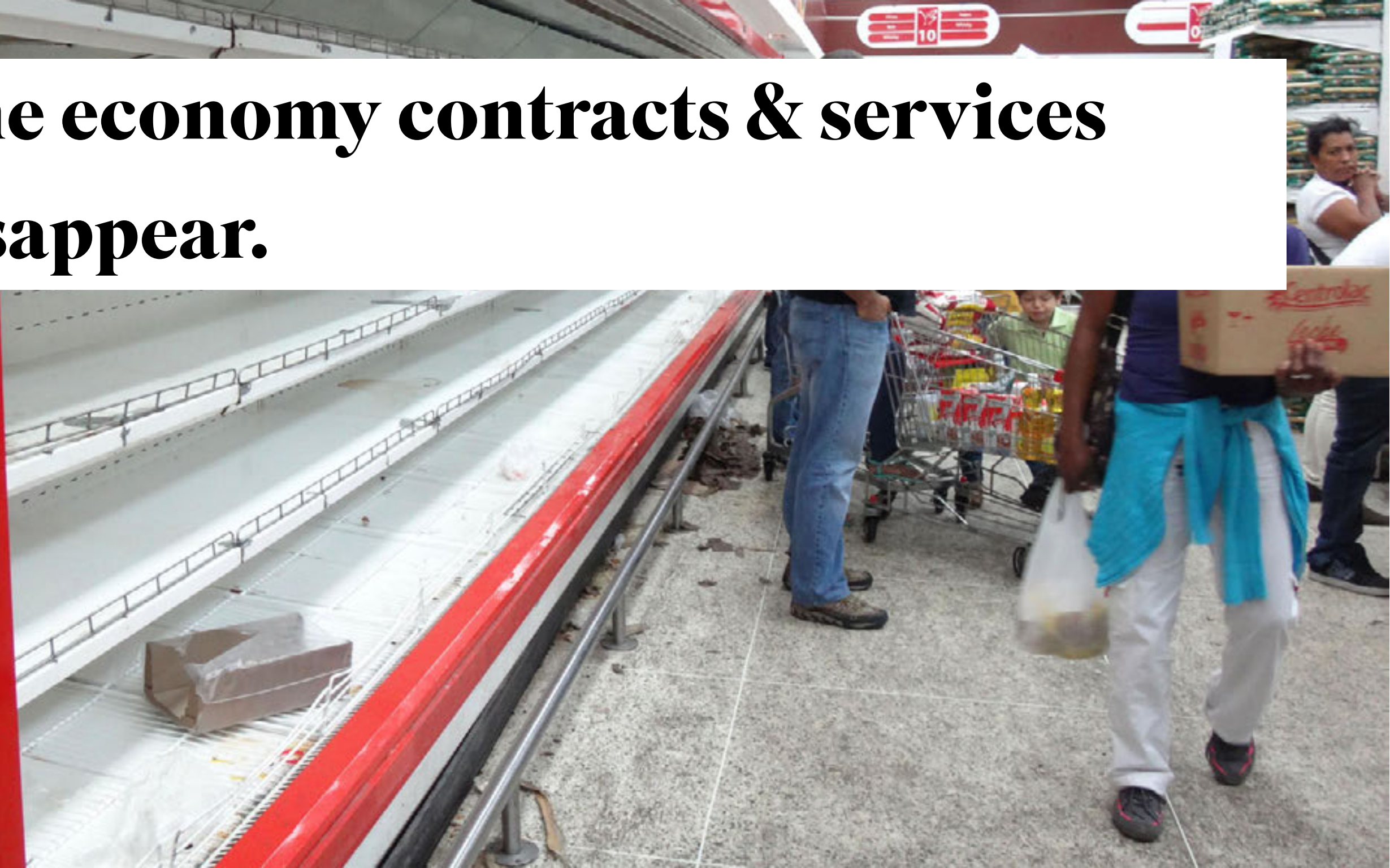
Scenario 3: The Village



State responses prove to be ineffective or unsustainable. Local communities attempt to fill the void.



The economy contracts & services disappear.



**We are forced to support each other
through local markets & DIY
solutions.**



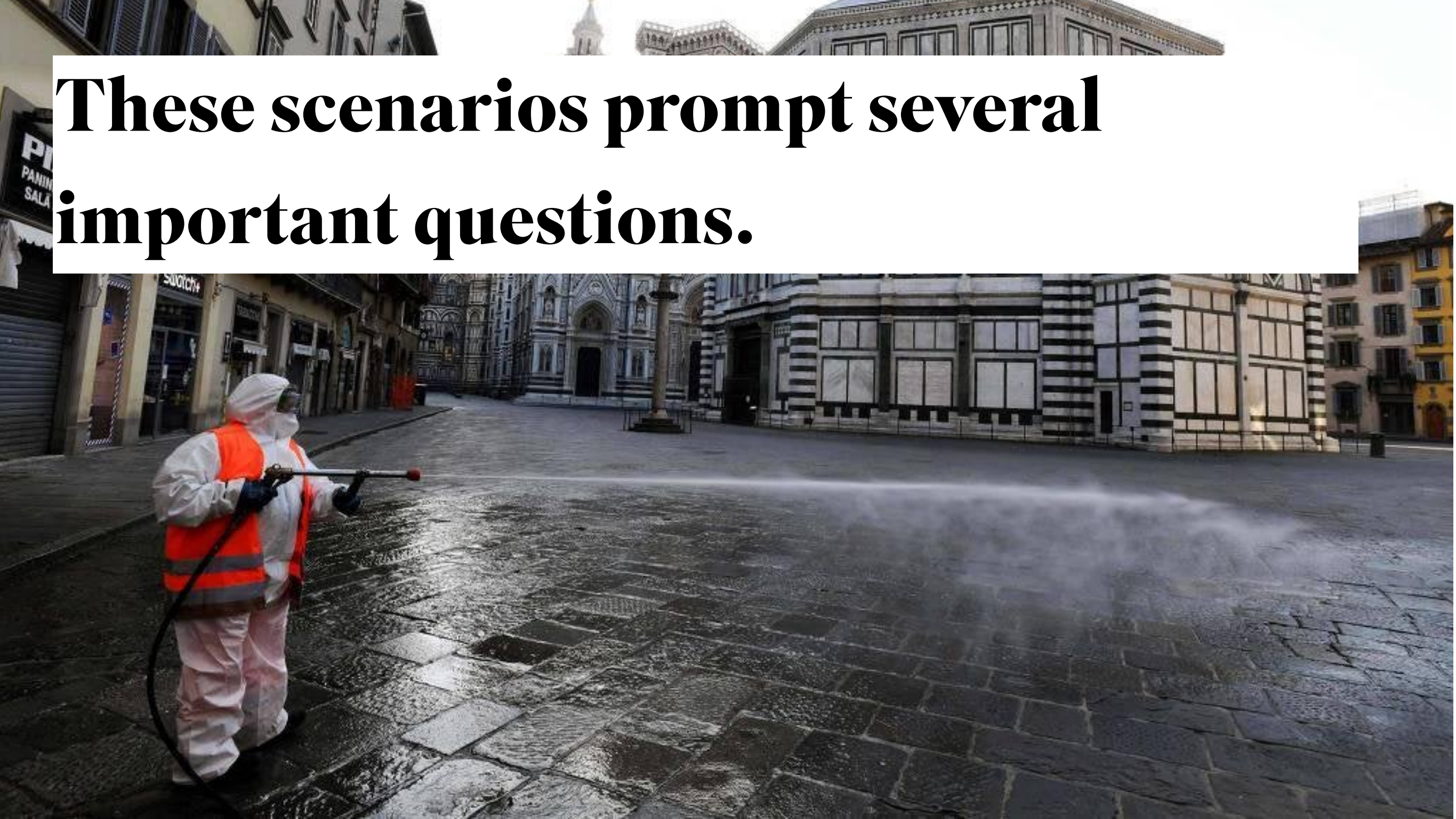
We get to spend more time with our friends and family...



But become more fragile & poor.



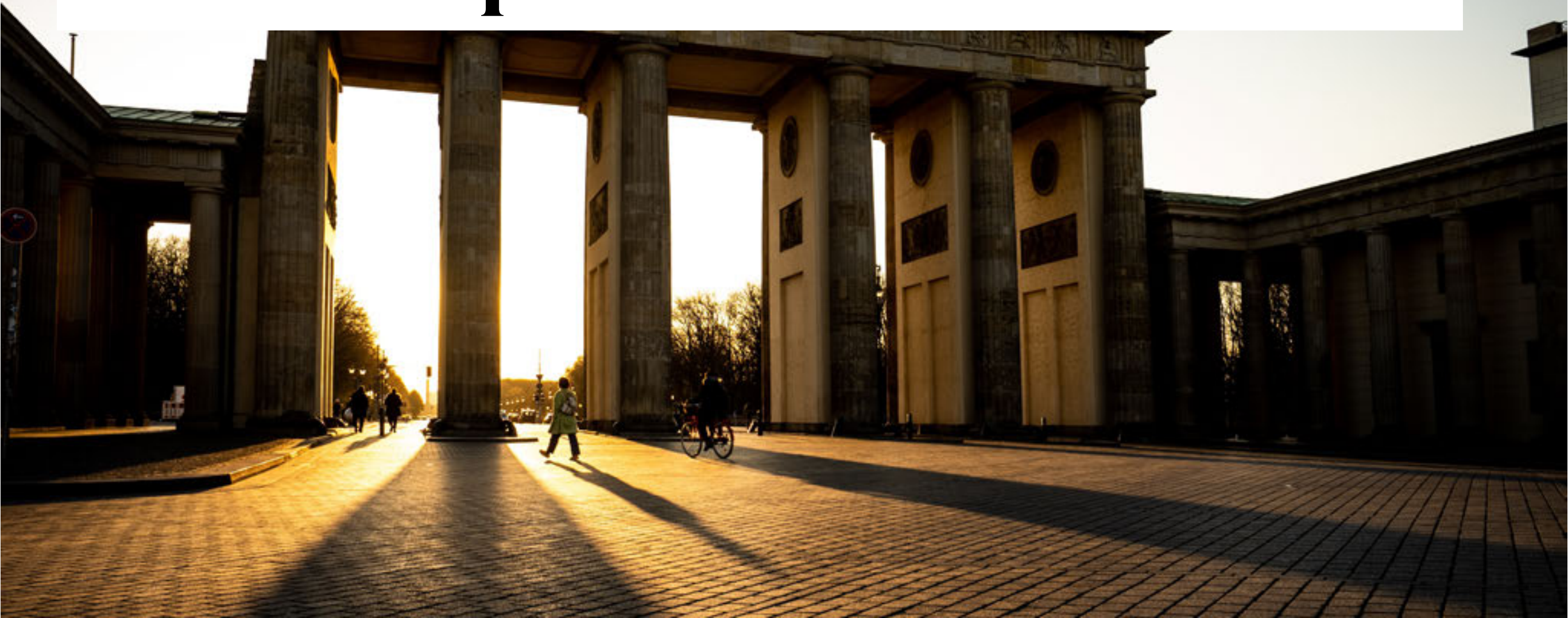
These scenarios prompt several important questions.



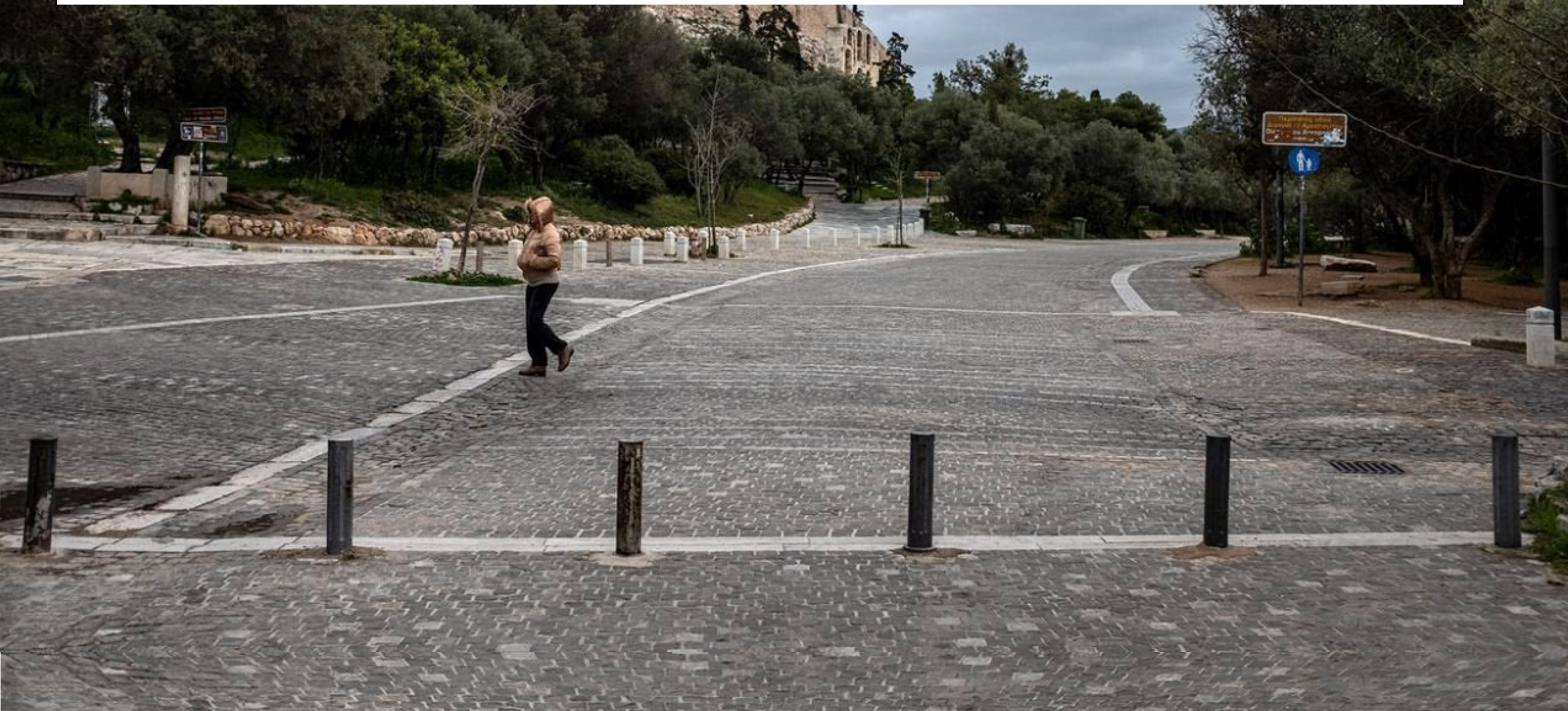
Which scenario is more likely in your country?



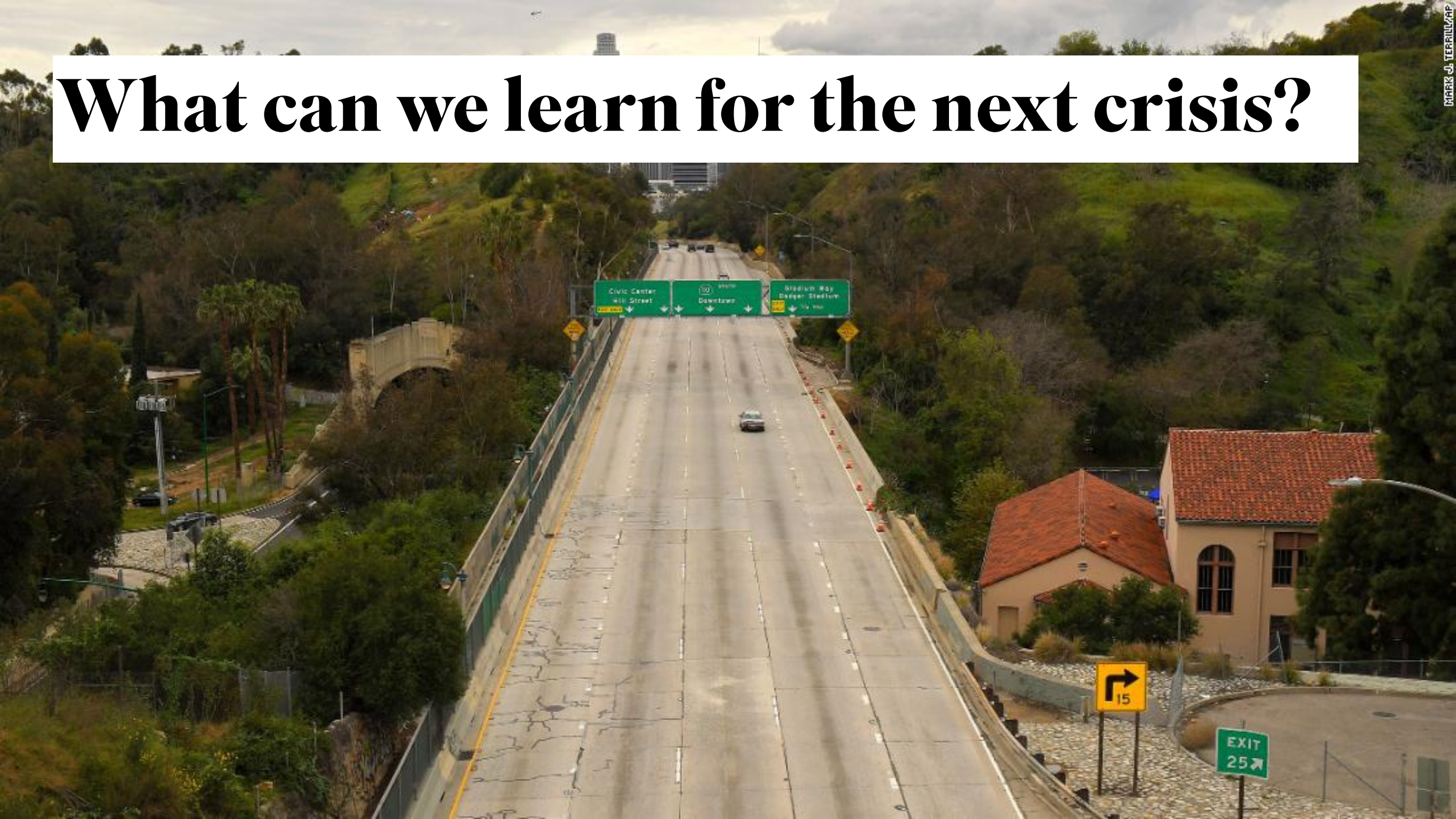
What kind of leadership would each scenario require?



What can individuals do?



What can we learn for the next crisis?



How can we balance preparedness with hope?



A photograph of a classical stone building facade, likely a government or institutional building. The building features a series of windows and a prominent arched entrance on the left. A guard in a blue uniform stands near the archway. The text "Thank you." is overlaid in a large, bold, black serif font on a white rectangular background in the upper left corner.

Thank you.

Download the full scenarios at:
www.greybriefings.com